

# ARIZONA WOODTURNERS ASSOCIATION

A Chapter of the  
American Association of Woodturners

## March 2013 Bonnie Klein All Day Demo Fairway Rec Center

### Next Meeting:

Saturday,  
March 16th, 2013  
Sun City AZ 9-4pm

President's Challenge:  
None

Fairway Rec. Center  
10600 W, Peoria  
Sun City, AZ

### Inside This Issue

Announcements	1
Making Good Shavings	2
Treasurer's Report	3
Beginner's Corner	4
From the Editor	6
Hands-On Demos	6
Gallery Photos	7
Calendar	8
Classified Ads	8
Club Officers	8



Bonnie Klein will demonstrate her personal take on woodturning with a focus on small projects and tools. \$20 entry fee payable at the door via cash or check. Entry includes lunch and afternoon refreshments.

President's message

by Jason Clark

# ... making Good Shavings

As a 501(c)3 educational charity we have a requirement to give back to the community. Our stated objective is "To foster a wider understanding and appreciation of lathe-woodturning as a traditional and contemporary craft and art form among the general public, hobbyist woodturners, part-time woodturners, and professional woodturners. This shall be accomplished by providing education, information, organization and technical assistance relating to woodturning. Future plans include offering conferences, audio/visual programs and mentor programs". We've been pretty good about parts of this objective but I believe improvements can be made in other areas, particularly the "providing education" and "mentor programs" parts. At the beginning of 2012 we established the "Shorty Hart memorial education fund". With club member contributions and with a \$1,500 grant from the American Association of Woodturners the fund quickly swelled to around \$3,000. With 50% of the DWR auction proceeds directed to this fund it climbed even further, to over \$6,000. This month we made the first disbursement of these funds. We recently ordered over \$500 worth of tools, primarily gouges, that once delivered will be donated to Mesquite High School. I also had the opportunity to go into the

classroom and do a couple hours of demonstrations on basic tool use and safety. Several of the students were very interest-

ed, one in particular gave up a portion of his lunch hour to ask questions and ask my advice on his current project.

We hope that once this contribution is complete that the word will start to spread among the local shop teachers and we'll have more opportunities to get young people involved. We're also working with the owners of the local wood-working stores to get the names and contact information for some of the local shop teachers so we can seek them out.

We also have an opportunity to work with Seeds for Autism, a local program that helps with vocational training for individuals with autism and Asperger's. Club members Chuck LaRue and Carl Smith have been working with this program for a while but now we have the opportunity to join them.

Beads of Courage is another area where we can give back to the community. They're a Tucson based program that works with children with serious medical issues like cancer, blood diseases, organ transplants and other diseases that require extended hospital stays or frequent visits. Our involvement is in the creation and donation of lidded boxes which will

then be passed on to these sick children. Following each treatment or procedure the patient receives a bead signifying the type of treatment endured. The lidded boxes that we make and donate will be used by the children to store their beads. Many of them endure hundreds and even thousands of procedures so they can end up with a very large volume of beads.

We're actively looking for other areas where we can give back. We will be exploring potential involvement with some of the local Empty bowls projects and invite our members to suggest other worthy causes. With the 2014 American Association of Woodturners national symposium occurring in Phoenix we've never had a better opportunity to raise awareness of our craft and the potential to give back to the local community has never been greater.

Jason Clark  
 President, Arizona Woodturners Association

## Treasurer's Report:

<b>Dec. 2012</b>	<b>Start</b>	<b>Debits</b>	<b>Credits</b>	<b>Transfers</b>	<b>Total</b>
<b>Checking</b>	<b>\$ 33,211.72</b>	<b>\$ (767.85)</b>	<b>\$ 4,300.79</b>	<b>\$ -</b>	<b>\$ 36,744.66</b>
<b>Savings</b>	<b>\$ 9,320.03</b>	<b>\$ -</b>	<b>\$ 0.40</b>	<b>\$ -</b>	<b>\$ 9,320.43</b>
<b>Total</b>	<b>\$ 42,531.75</b>	<b>\$ (767.85)</b>	<b>\$ 4,301.79</b>	<b>\$ -</b>	<b>\$ 46,065.09</b>
<b>Net</b>	<b>\$ 3,532.94</b>				

**Notes: Credits primarily DWR registrations**

<b>Jan. 2013</b>	<b>Start</b>	<b>Debits</b>	<b>Credits</b>	<b>Transfers</b>	<b>Total</b>
<b>Checking</b>	<b>\$ 36,744.66</b>	<b>\$ (2,793.92)</b>	<b>\$ 18,539.00</b>	<b>\$ -</b>	<b>\$ 52,489.74</b>
<b>Savings</b>	<b>\$ 9,320.43</b>	<b>\$ -</b>	<b>\$ 0.39</b>	<b>\$ -</b>	<b>\$ 9,320.82</b>
<b>Total</b>	<b>\$ 46,065.09</b>	<b>\$ (2,793.92)</b>	<b>\$ 18,539.39</b>	<b>\$ -</b>	<b>\$ 61,810.56</b>
<b>Net</b>	<b>\$ 15,745.87</b>				

**Notes: Credits include 2013 dues and DWR registrations, Debits include meeting location rent.**

<b>Feb. 2013</b>	<b>Start</b>	<b>Debits</b>	<b>Credits</b>	<b>Transfers</b>	<b>Total</b>
<b>Checking</b>	<b>\$ 52,489.74</b>	<b>\$ (10,104.95)</b>	<b>\$ 12,927.00</b>	<b>\$ -</b>	<b>\$ 55,311.79</b>
<b>Savings</b>	<b>\$ 9,320.82</b>	<b>\$ -</b>	<b>\$ 0.33</b>	<b>\$ -</b>	<b>\$ 9,321.15</b>
<b>Total</b>	<b>\$ 61,810.56</b>	<b>\$ (10,104.95)</b>	<b>\$ 1,927.33</b>	<b>\$ -</b>	<b>\$ 64,632.94</b>
<b>Net</b>	<b>\$ 2,822.38</b>				

**Notes: Credits are primarily DWR registrations and proceeds. Debits are primarily DWR expenses.**

<b>Mar. MTD</b>	<b>Start</b>	<b>Debits</b>	<b>Credits</b>	<b>Transfers</b>	<b>Total</b>
<b>Checking</b>	<b>\$ 55,311.79</b>	<b>\$ (5,583.08)</b>	<b>\$ 5,787.00</b>	<b>\$ -</b>	<b>\$ 55,515.71</b>
<b>Savings</b>	<b>\$ 9,321.15</b>	<b>\$ -</b>	<b>\$ -</b>	<b>\$ -</b>	<b>\$ 9,321.15</b>
<b>Total</b>	<b>\$ 64,632.94</b>	<b>\$ (5,583.08)</b>	<b>\$ 5,787.00</b>	<b>\$ 0.00</b>	<b>\$ 64,836.86</b>
<b>Net</b>	<b>\$ 203.92</b>				

**Notes: Credits and Debits are primarily DWR related income and expenses. Approx \$20,000 in DWR expenses remain outstanding.**



## Library Review - The Art of Hosaluk in Woodturning.

First the video was very long two disc set, however very inspiring. Michael is truly creative. He covers Making a Spinning Top, Making a Ball, Hollow Turning, Offset Turning, Make Strange Fruit, Make a Teapot, Make a Bowl, Make Candlesticks, Make a Box, Form, Design Ideas, Painting, Tools, Photo Gallery and a Cutting Room Floor. His teapots are very unique. I would recommend watching the video's for ideas as I have several new projects planned.

---

### Beginner's Corner:

Mounting a blank on the lathe can sometimes be a challenge. There are a number of ways to accomplish this task; each method has both benefits and drawbacks.

Between centers - This is one of the most common methods to mount a blank, particularly spindle blanks where the grain is running parallel to the bed of the lathe. There are a variety of drive centers on the market, 2 prong, 4 prong, multi tooth, and safety centers. I prefer a multi tooth center. Bowl and hollow form blanks can also be mounted between centers, in many cases this can be preferable to other methods as the blank can be shifted to align the grain or center the blank. The downside is that sometimes this is not the most secure method - there's nothing securing the blank other than pressure between the live center and the drive center.

Faceplate - Most lathes come with a faceplate. Faceplates are usually internally threaded to fit on the spindle of the lathe. Screws are driven through the faceplate and into the blank. This can be a very secure method of mounting a blank but it offers little in the way of adjusting the blank once it's mounted. You also may have to deal with a series of screw holes in the blank once the faceplate is removed.

Screw chuck - Most chucks come with some type of screw that is held in the jaws. A pilot hole is drilled in the blank and then the blank is threaded onto the screw. Dedicated screw chucks are also available. This can be a very secure method of mounting a blank, particularly when the tailstock is also used for support. Similar to faceplates there is little chance for adjustment; it's also relatively easy to deal with a small pilot hole in the middle of a blank.

Scroll chuck - Commonly used to mount bowls, boxes, hollow forms, and platters to allow complete access to the inside. This is normally done by gripping a tenon or expanding into a recess. Smaller square blanks can be gripped inside the jaws as well. While this is a very common method it's not the most secure, we rely solely on the integrity of the wood to secure it to the lathe. It's not

continued on page 5



Beginner's Corner ... (continued from page 4)

only possible but probable that eventually you will experience a failure; a tenon will shear off, a recess will split, or a catch will tear the blank right out of the jaws. What a scroll chuck lacks in security it more than makes up for in convenience.

There are number of other options: double stick tape, glue blocks, collet chucks, and a variety of other methods. No matter which option you choose make sure you turn safely. Use the tailstock whenever possible and stay out of the line of fire. Above all else, if something doesn't feel safe don't do it.

Welcome to the wonderful world of Woodturning!  
Jason Clark



Standing Room Only at the DWR for the  
John Lucas Demo



# ... from the Editor



The Desert Woodturning Roundup was a great success. This was my second DWR and I always come away with way more ideas than I have time. For a guy that has a hard time coming up with ideas, I really get my money's worth. I was honored to come away from the DWR with two pieces I purchased, one from Richard Raffan and the other from Molly Winton. My daughters also picked a piece out from our own Ken Waller. I am also excited about the CBN Wheel I bought and the NIP bowl blank.

Speaking of another amazing experience was the day with Richard Raffan Class. Richard had several truly unique tools and sharpenings. I learned a lot, including how to sharpen freehand a bowl gouge. Talk about fast and relatively easy. His beading techniques were straight forward and easy to learn, but genius. Needless to say I am pulling out the scrapers again. The class was well worth taking the day off from work.

Please e-mail me or call me with ideas or articles.

**Chip**



## AWA Hands-on Demonstrators Mark St. Leger Nov. 2013



Woodturning is an art that should be explored and felt with each piece of wood we have the good fortune to work with. Artistic inspiration for me presents itself in many ways. When I allow myself to slow down, I become more aware of the natural beauty that surrounds us. I am amazed by the movement of water as it slowly carves and gently sculpts the ever changing shorelines. I continue to be humbled and in awe over the wonders I encounter while paddling in my kayak. Keeping an open mind while developing a new piece begins a journey worth traveling.

AWA Membership Benefits-  
Discounts: Woodworkers  
Source, Woodcraft, Rockler,  
Timber Woodworking

# American Woodturners Association

## Phoenix June 2014

The annual AAW symposium is the highlight of the woodturning year, meeting in different locations throughout the United States. It has become the most attended woodturning event worldwide. Each symposium features three days of woodturning demonstrations and meetings, led by several talented experts:

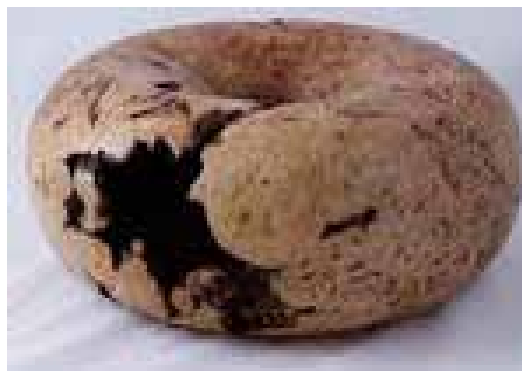
- Internationally known woodturners
- The highest quality woodturning instructors
- Knowledgeable local talent

Multiple rotations are held simultaneously so attendees have many different types and styles of woodturning demonstrations available. Many of the demonstrations are held multiple times so the attendee has the opportunity to attend sessions they may have missed.

Each symposium has had a unique flavor, but most of them have the following features: A rotation schedule of more than 100 classroom-type demonstrations and panel discussions, hosted by the world's best woodturning professionals. An instant gallery like no other on earth, with up to three pieces submitted by each attendee. A Saturday night banquet. The Friday Special Interest Night, where like-minded turners get together for some fun. An auction of tools, wood, and fine woodturnings. Funds from the auction fund scholarships for woodturning education. The largest woodturning tradeshow anywhere, including tool and lathe manufacturers, vendors of wood and other materials, and suppliers related to woodturning.



## Members' Gallery



## Woodturning

2012 Instant Gallery at club meeting. Top left by Norris Ready, center piece by Jason Clark, bottom left 2 pieces by Dale Gillaspay and bottom right by Ken Lappegard.

## Advertisements

=====

**E-mail Chip Hiding at  
chiphidinger@netzero.net to  
place an advertisement in the  
newsletter. Advertisements are  
free for club members.**

=====

=====



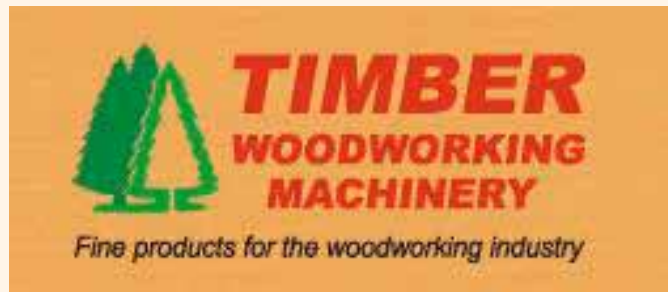
Rules for advertisements: Free ads are available only to AWA members. The deadline for submission or cancellation of an ad is the 10<sup>th</sup> of the month to be placed in that month's newsletter. Ads will only run for one issue unless notified otherwise. If you wish to continue running an ad for more than one month, please advise the editor, Chip Hiding, by the 10<sup>th</sup> of the month. Also, if you decide to cancel an ad, please notify the editor by the 10<sup>th</sup> of the month.

## Calendar

**NOTE:** The Regular Monthly Meetings are held on the third Saturday of each month at the Pyle Center, 655 E. Southern Ave., Tempe, Arizona. All meetings start at 12:00 pm and end at 4:00 pm unless otherwise posted.

Meetings typically start out with club business, followed by the featured demonstration, and then the raffle and prize drawings. Board meetings are open to all club members and are held every other month one hour prior to the regular meeting.

<u>Date</u>	<u>Demonstrator</u>	<u>Topic</u>	<u>President's Challenge Due</u>
April 20th, 2013	TBD		Ebony
June 15th, 2013	Ed Pabst - Threading		Desert Ironwood
July 20th, 2013	Kathy Marshall - Coring		Green to Finish
November 16th, 2013	Mark St. Leger - All Day Demo		N/A



935 E. Southern Ave, Mesa AZ 85204  
(480)926-2131  
<http://www.timberww.com>

## Board of Directors

**President – Jason Clark**  
Home phone 480-688-9291  
[jclark58@gmail.com](mailto:jclark58@gmail.com)  
**Vice President – Dale Gillaspay**  
[turnandtwists@gmail.com](mailto:turnandtwists@gmail.com)  
**Treasurer - Ana Lappegard**  
[ken.ana@netzero.net](mailto:ken.ana@netzero.net)  
**Librarian – Pete Beschenbossel**  
[pbeschen@aol.com](mailto:pbeschen@aol.com)  
**Secretary & Newsletter – Chip Hiding**  
[chiphidinger@netzero.net](mailto:chiphidinger@netzero.net), Cell  
602-677-3529

**AWA WEB SITE:**  
<http://www.azwoodturners.org>

The Arizona Woodturners Association newsletter is published quarterly. Inputs are due to the editor by the tenth of each month for inclusion in that month's newsletter.

AWA gives permission to all other AAW woodturning chapters, woodworking magazines, and newspapers to use any text material and accompanying photos or drawings contained herein for the benefit of woodturners everywhere. We ask that credit be given to the source of the material. AWA logos and graphics may not be copied without permission.

Copyright 2012,  
Arizona Woodturners Association